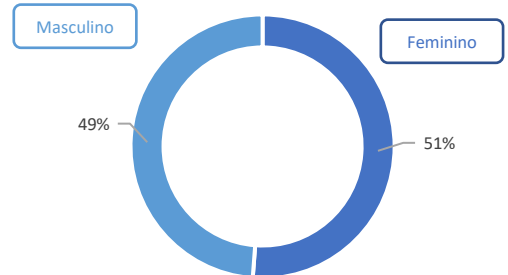
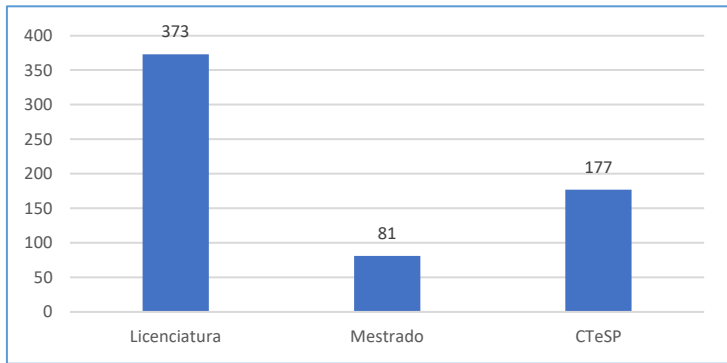
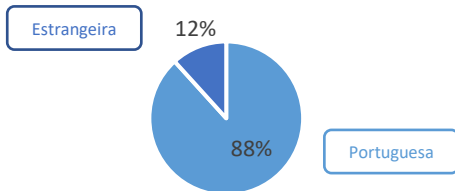


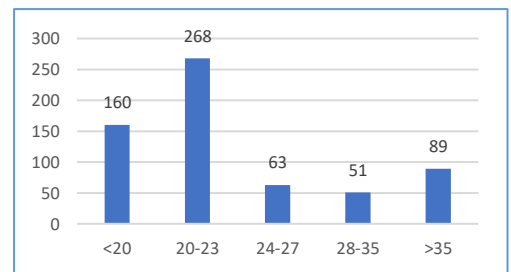
### Número de admissões por tipo de curso



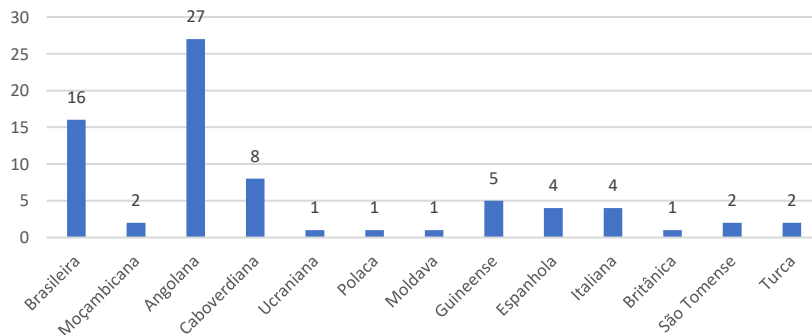
### Número de admissões por nacionalidade



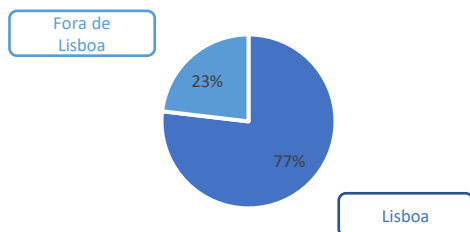
### Número de admissões por faixa etária



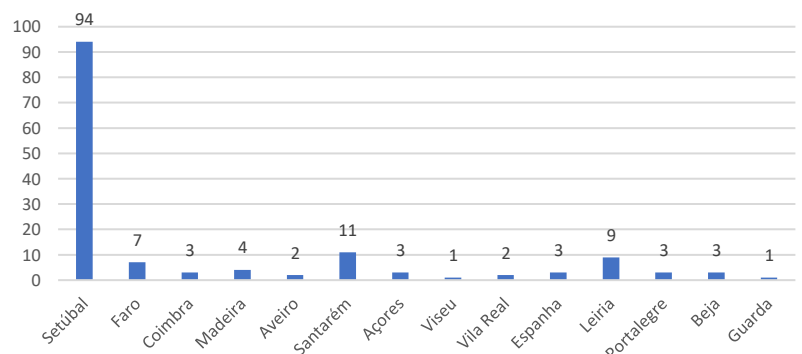
#### Nacionalidades Estrangeiras



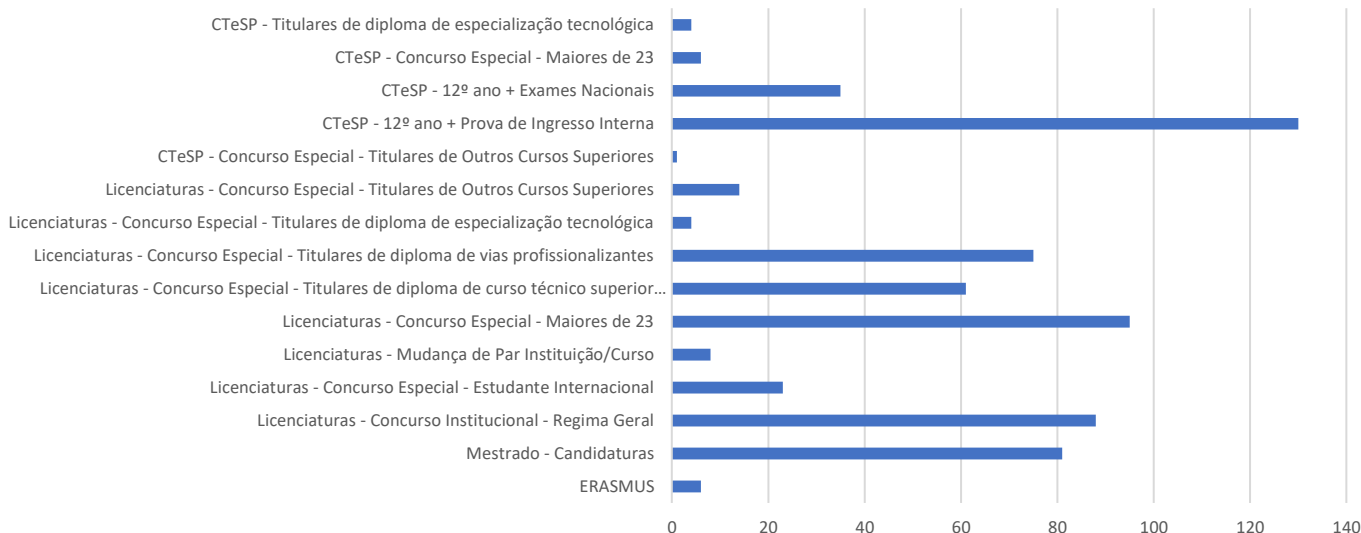
### Número de admissões por origem geográfica



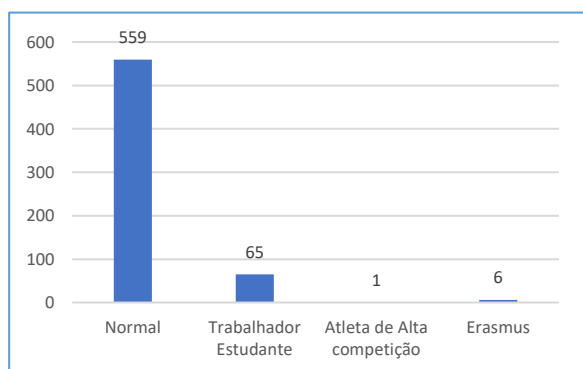
#### Origem geográfica - Fora de Lisboa



### Número de admissões por forma de acesso e ingresso



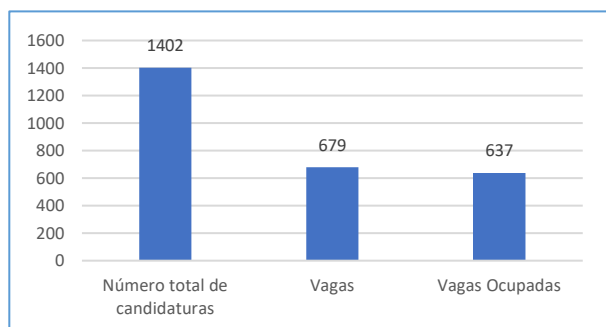
### Número de admissões por tipo de frequência



**Alunos na RECALL**  
18

**Alunos com NEE**  
4

### Candidaturas, Vagas e Colocados

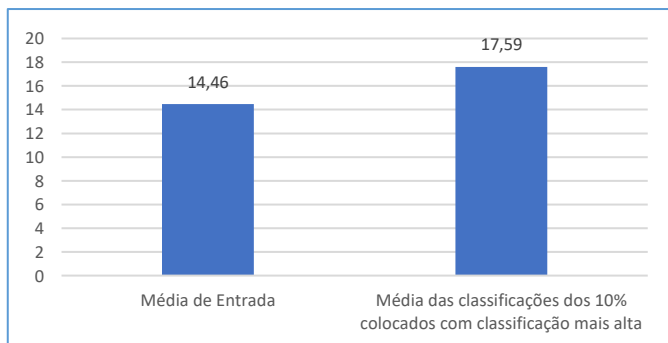


**Taxa de Ocupação**

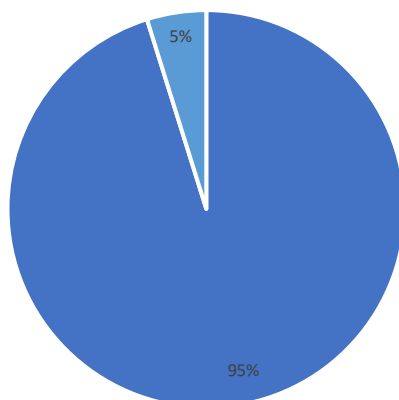
94 %

**Índice de deslocados\***

23 %



Número de admissões por reingresso



■ Outras formas de acesso ou ingresso ■ Reingresso

